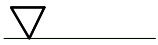
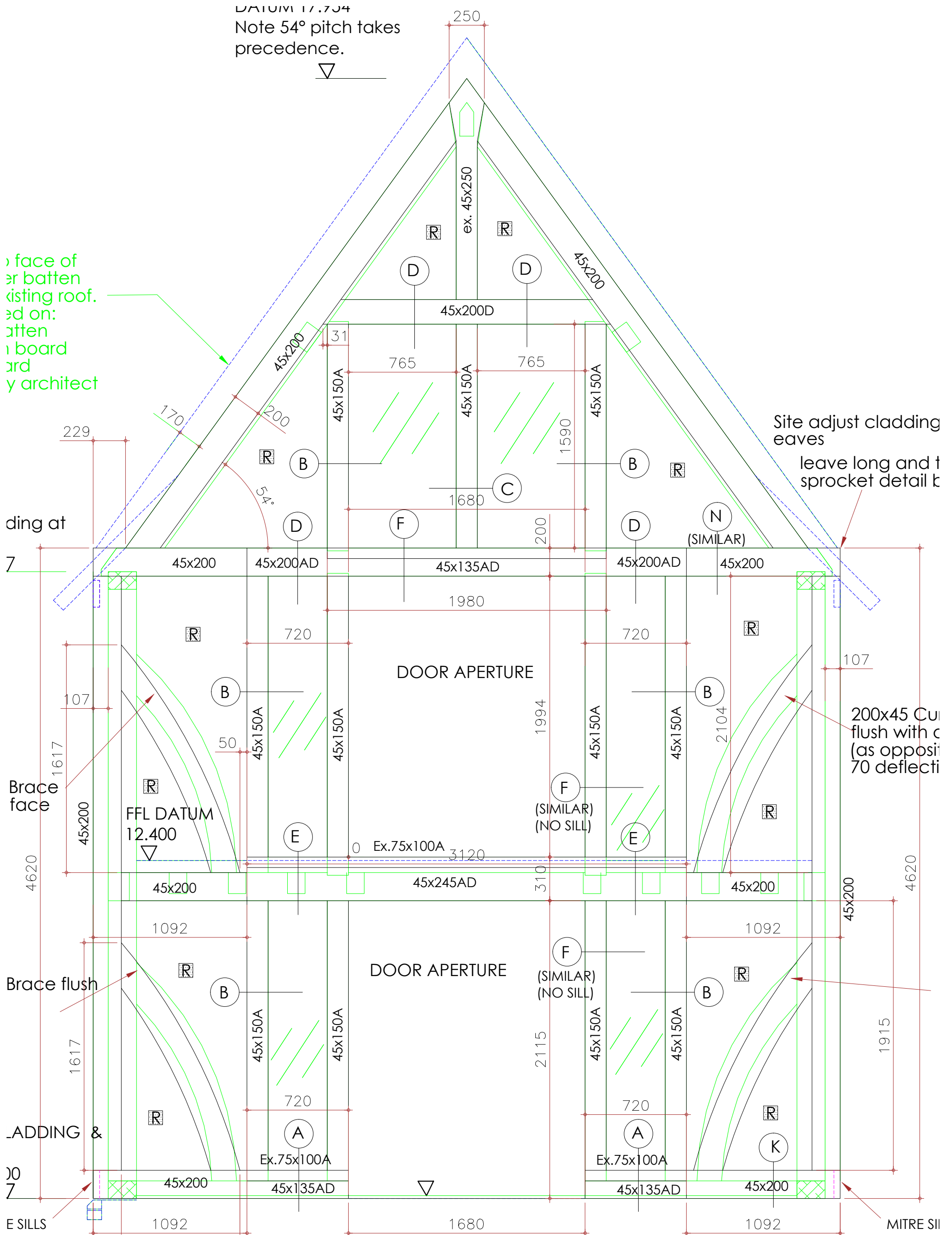


DATUM 17.734
 Note 54° pitch takes precedence.



face of
 or batten
 existing roof.
 ad on:
 atten
 board
 and
 y architect



REVISIONS: C
 REVISIONS: B
 REVISIONS: A

DATE: 30.08.2012
 DATE: 15.08.2012
 DATE: 22.06.2012

scale 1 : 25



Conservation Carpentry & Joinery
 Timber Frame Design & Construction
 Langley Farm, Langley, Liss, Hants. GU33 7JW
 Tel: 01730 892049 - Fax: 01730 895225
 enquiries@greenoakcarpentry.co.uk

PROJECT:

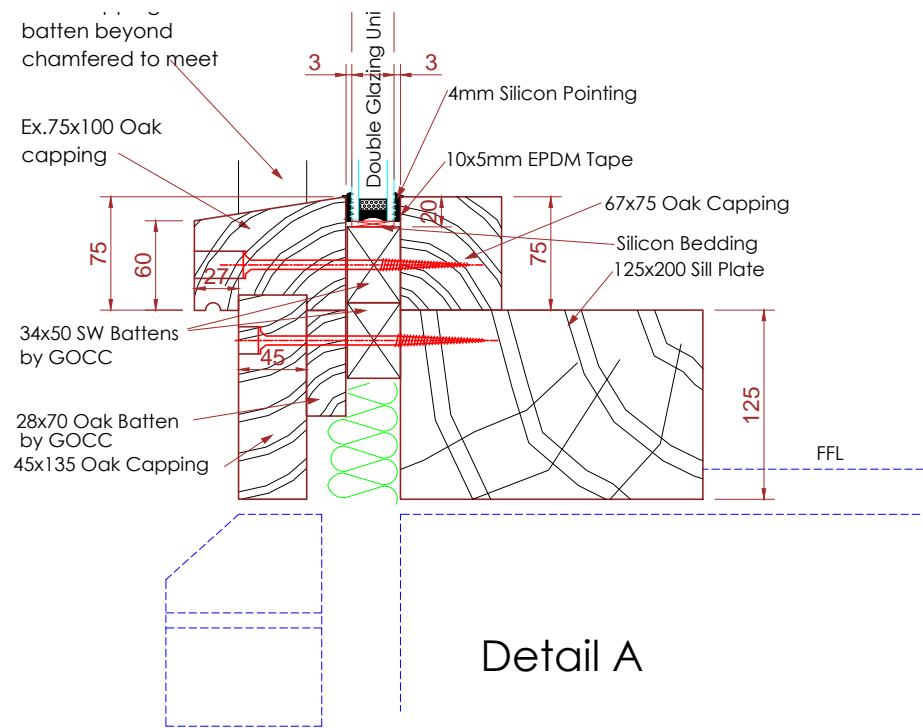
848 : Ashfield
 Extension
 Ewhurst

DRAWING TITLE:

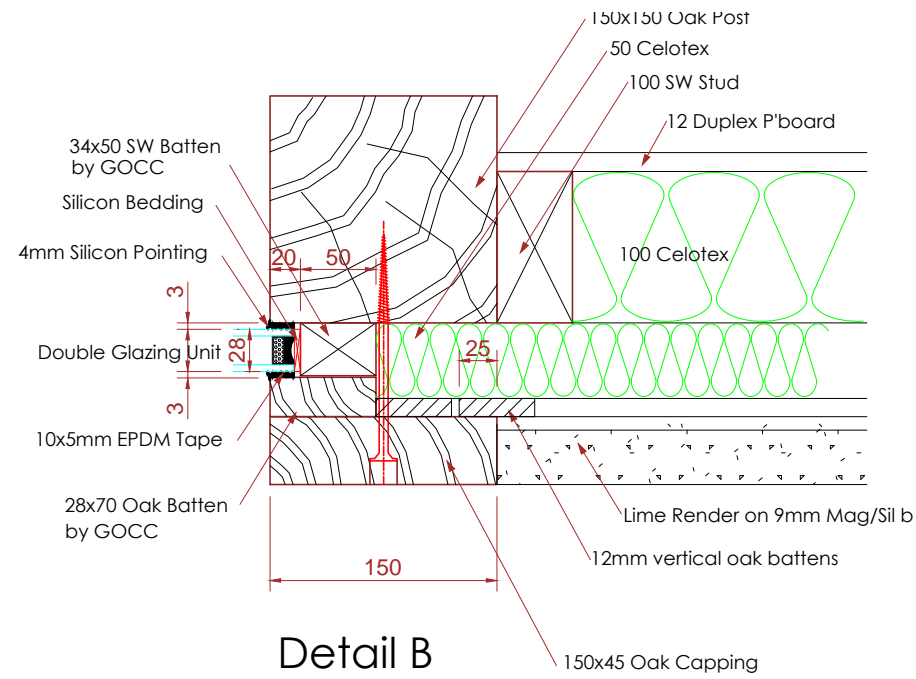
Cladding Framing XF1

ORIGINAL DATE: 08-05-12 STATUS: for Approval

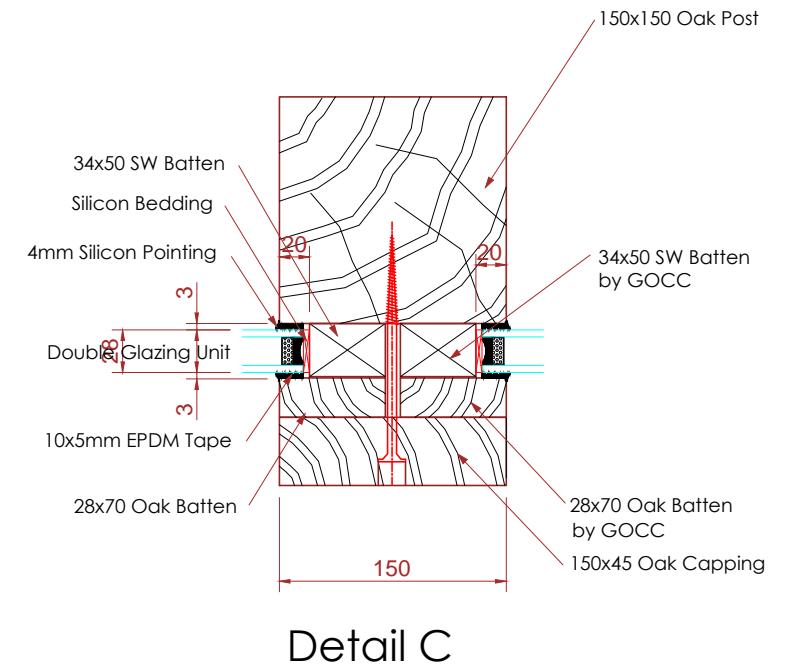
DRAWN BY: ST CHECKED BY: NUMBER: 848-011 REVISION: C



Detail A

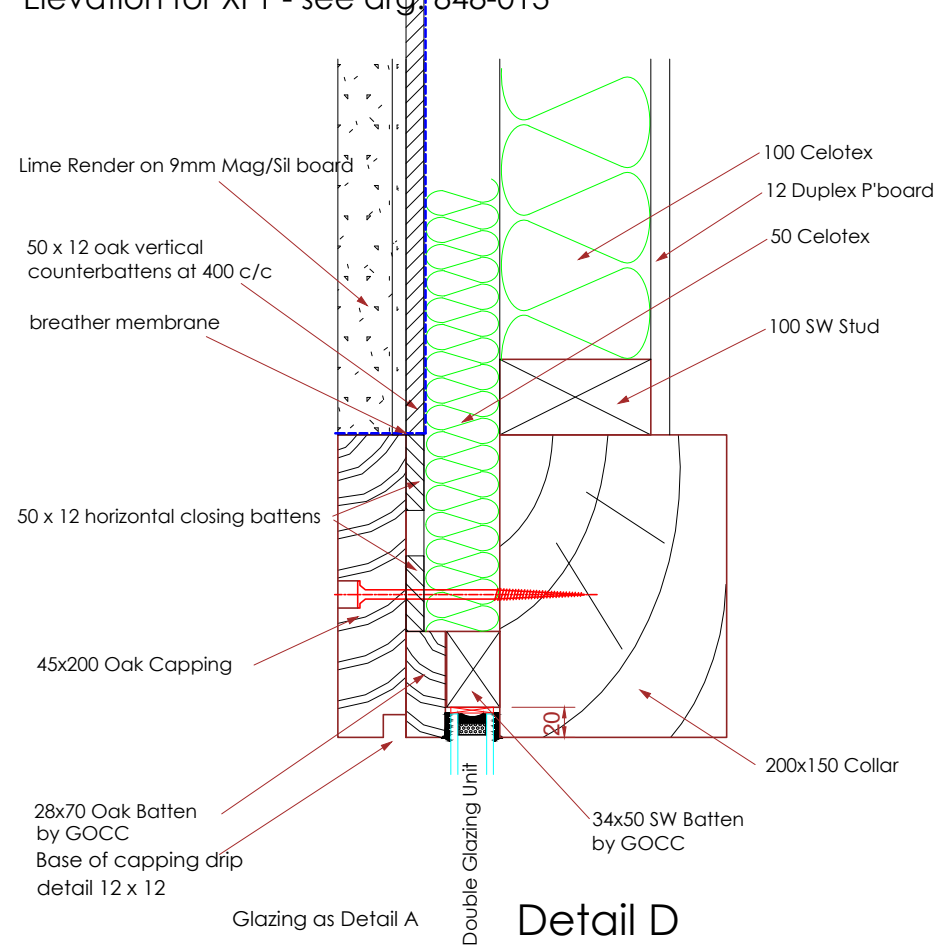


Detail B

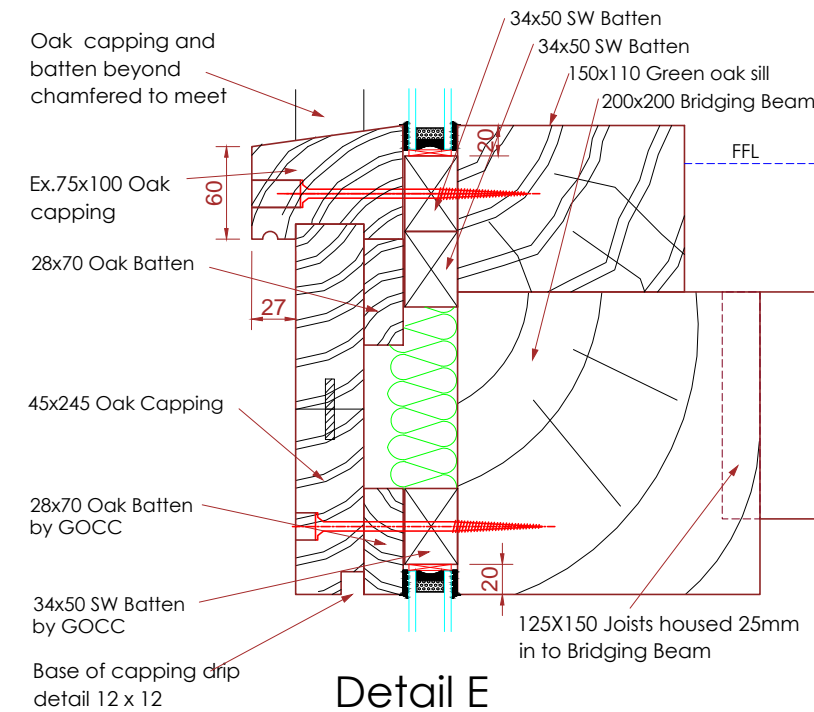


Detail C

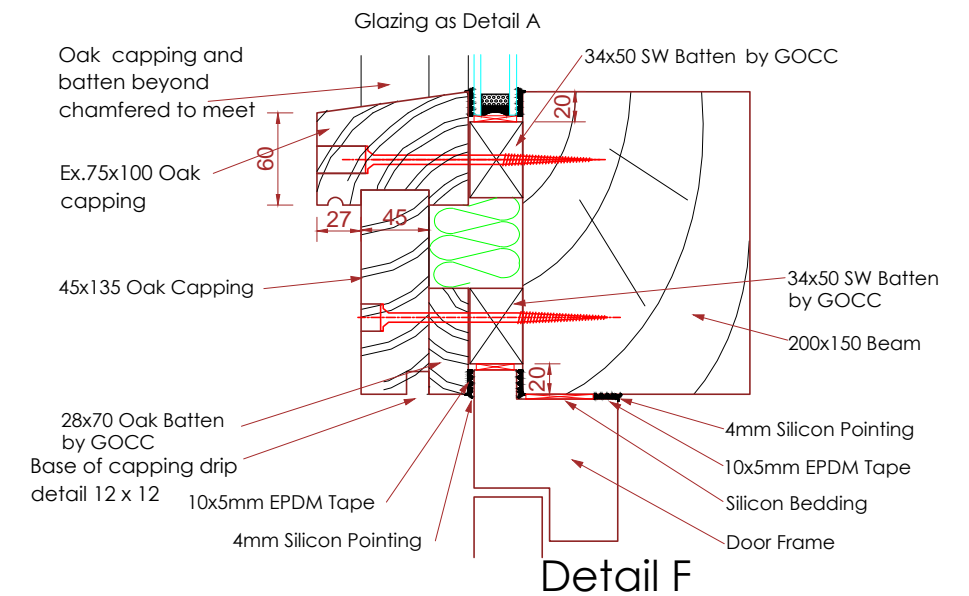
NOTE:
These details are to be read in conjunction with Wallpaper Cladding Elevation for XF1 - see drg. 848-013



Detail D



Detail E



Detail F

NOTES:
1. All oak cappings and battens around direct glazing to be joinery grade air dried oak (heart out).
2. Flashings, dpc, spacer bar, pointing colours, membrane and all other details by architect.
3. All dimensions, levels and details to be confirmed prior to frame fabrication by client / architect.
4. All fixings to be stainless steel - specification to be confirmed to suit details. Fixings in exposed capping locations to have 12 Ø counterbore and crossgrain pellet.

scale 1 : 5

REVISIONS: C DATE: 30.08.2012
REVISIONS: B DATE: 15.08.2012
REVISIONS: A DATE: 22.06.2012

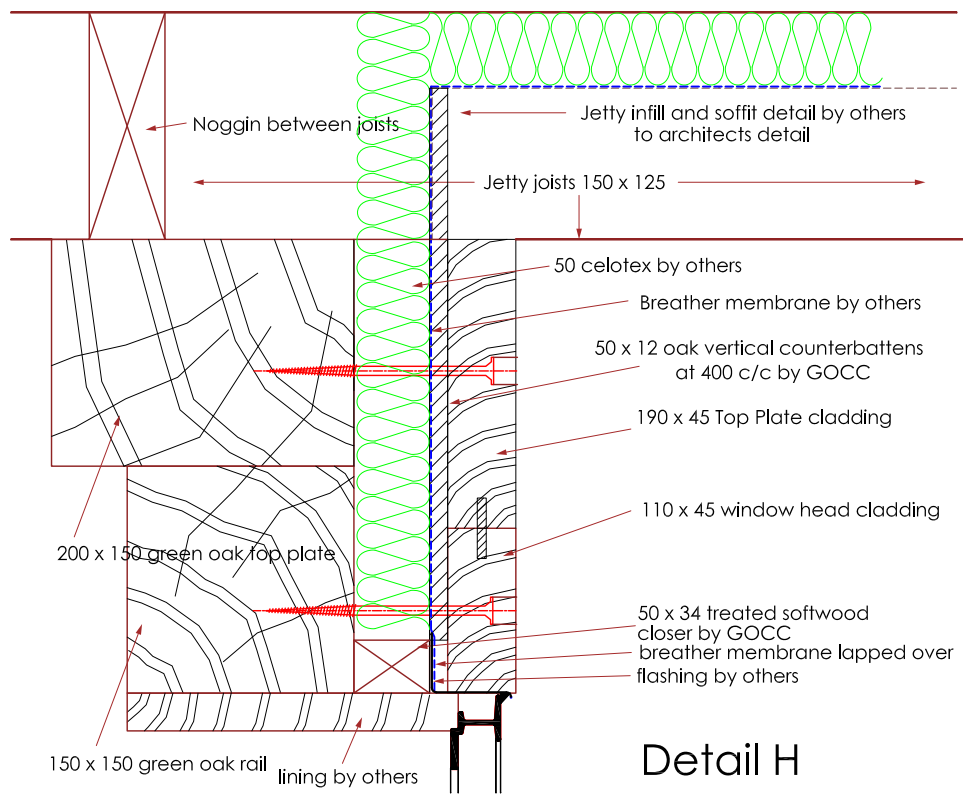


Conservation Carpentry & Joinery
Timber Frame Design & Construction
Langley Farm, Langley, Liss, Hants. GU33 7JW
Tel: 01730 892049 - Fax: 01730 895225
enquiries@greenoakcarpentry.co.uk

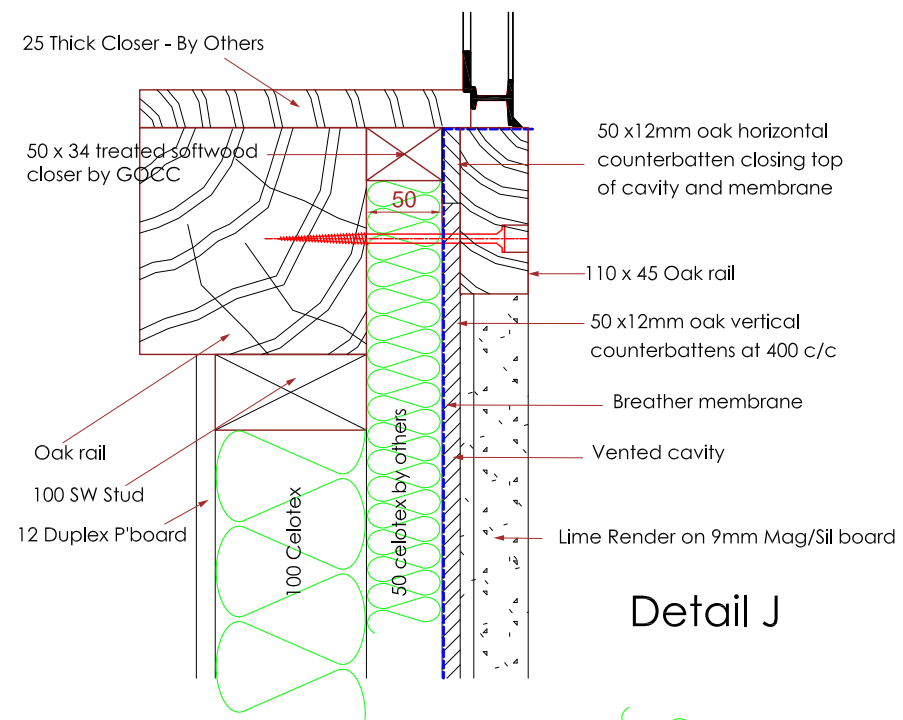
PROJECT:
848 : Ashfield Extension
Ewhurst

DRAWING TITLE:
Cladding Framing XF1 Details

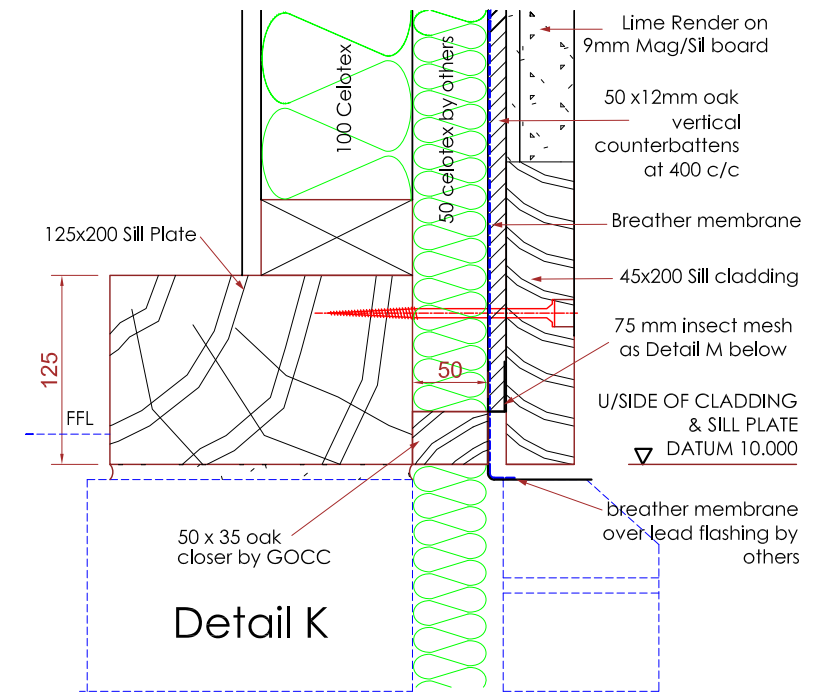
ORIGINAL DATE: 08-05-12 STATUS: for Approval
DRAWN BY: ST CHECKED BY: NUMBER: 848-014 REVISION: C



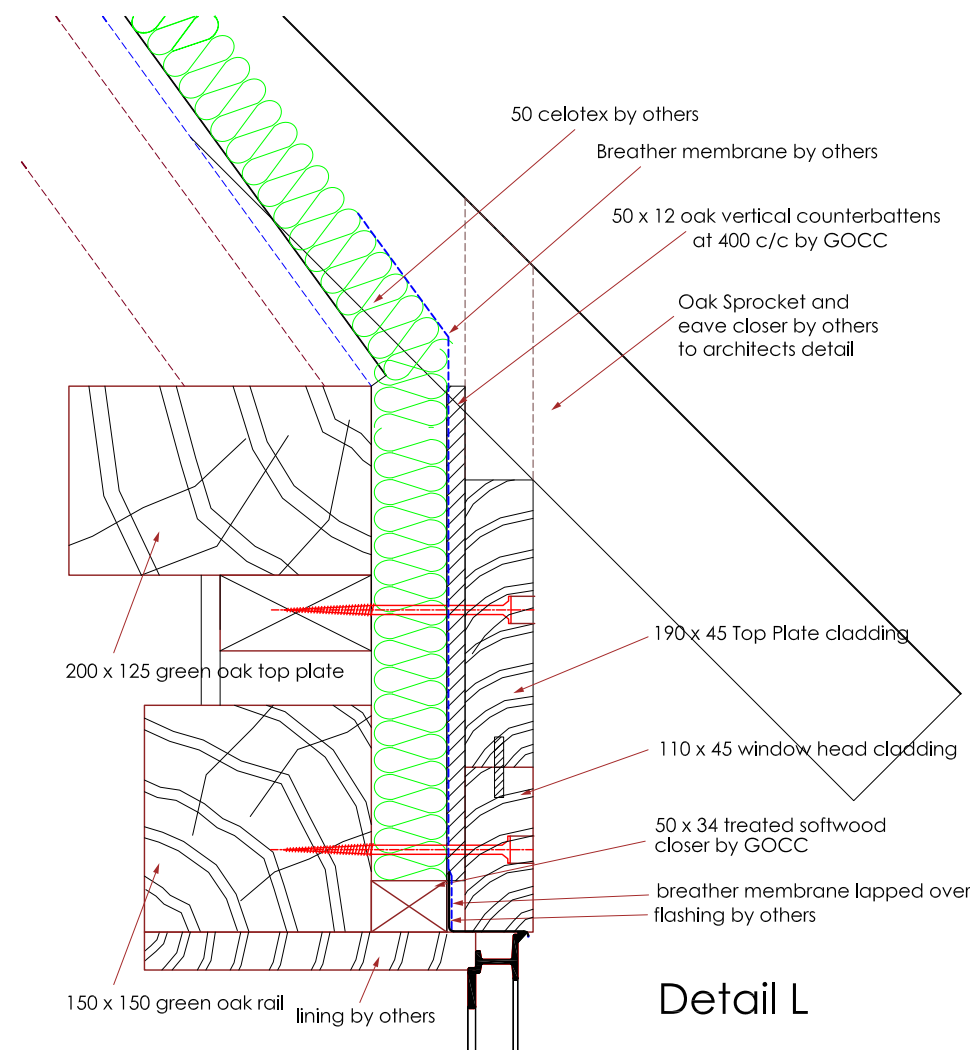
Detail H



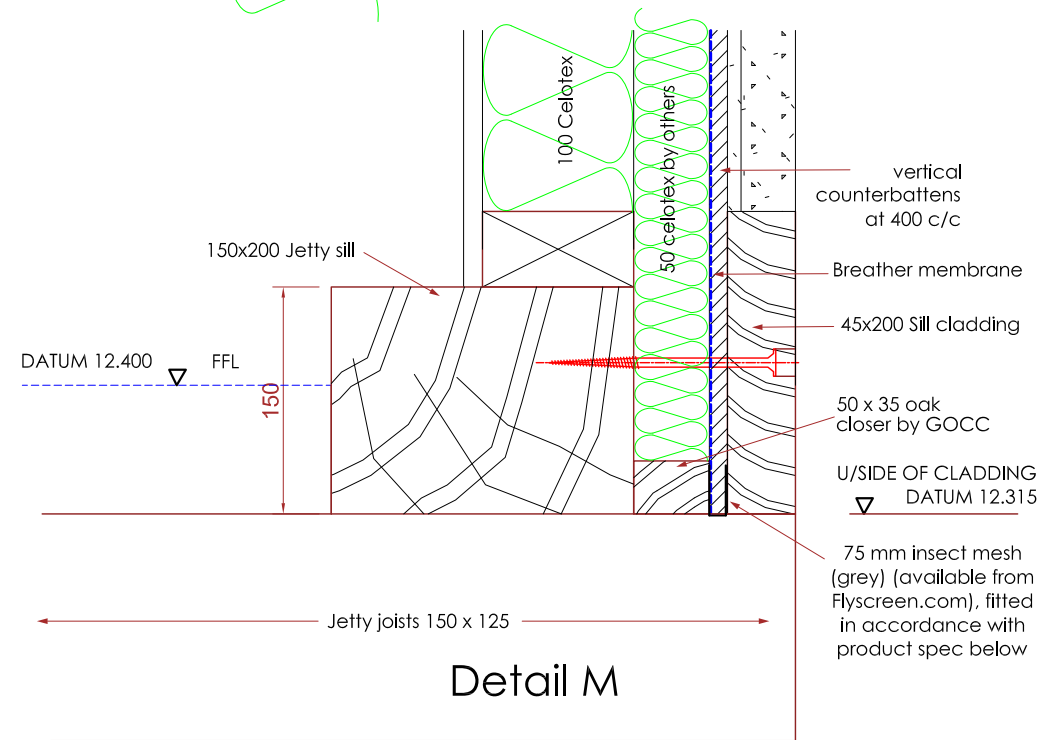
Detail J



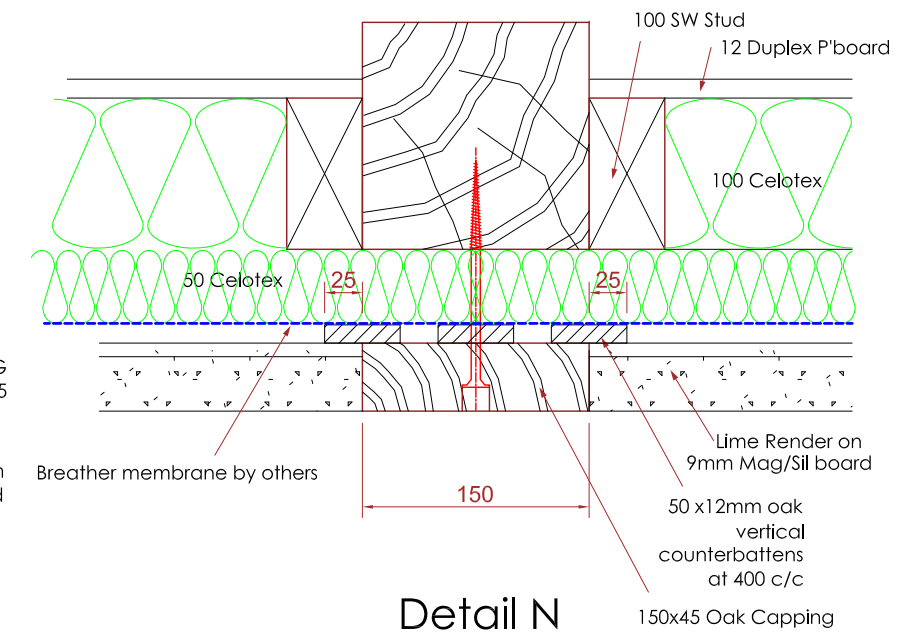
Detail K



Detail L



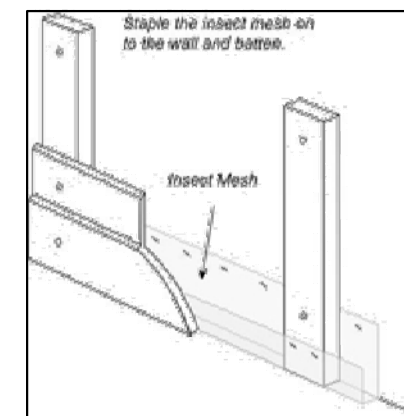
Detail M



Detail N

(Typical all vertical studs)

REVISIONS: C DATE: 30.08.2012
 REVISIONS: B DATE: 15.08.2012
 REVISIONS: A DATE: 22.06.2012



- NOTES:
1. All oak cappings and battens around direct glazing to be joinery grade air dried oak (heart out).
 2. Flashings, dpc, spacer bar, pointing colours, membrane and all other details by architect.
 3. All dimensions, levels and details to be confirmed prior to frame fabrication by client / architect.
 4. All fixings to be stainless steel - specification to be confirmed to suit details. Fixings in exposed capping locations to have 12 Ø counterbore and crossgrain pellet.

scale 1 : 5



Conservation Carpentry & Joinery
 Timber Frame Design & Construction
 Langley Farm, Langley, Liss, Hants. GU33 7JW
 Tel: 01730 892049 - Fax: 01730 895225
 enquiries@greenoakcarpentry.co.uk

PROJECT: 848 : Ashfield Extension Ewhurst
 DRAWING TITLE: Cladding Framing Details
 ORIGINAL DATE: 08-05-12 STATUS: for Approval
 DRAWN BY: ST CHECKED BY: NUMBER: REVISION: C
 - 848-015