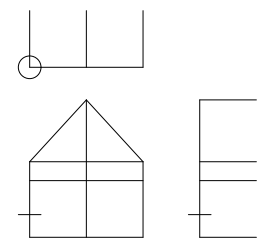
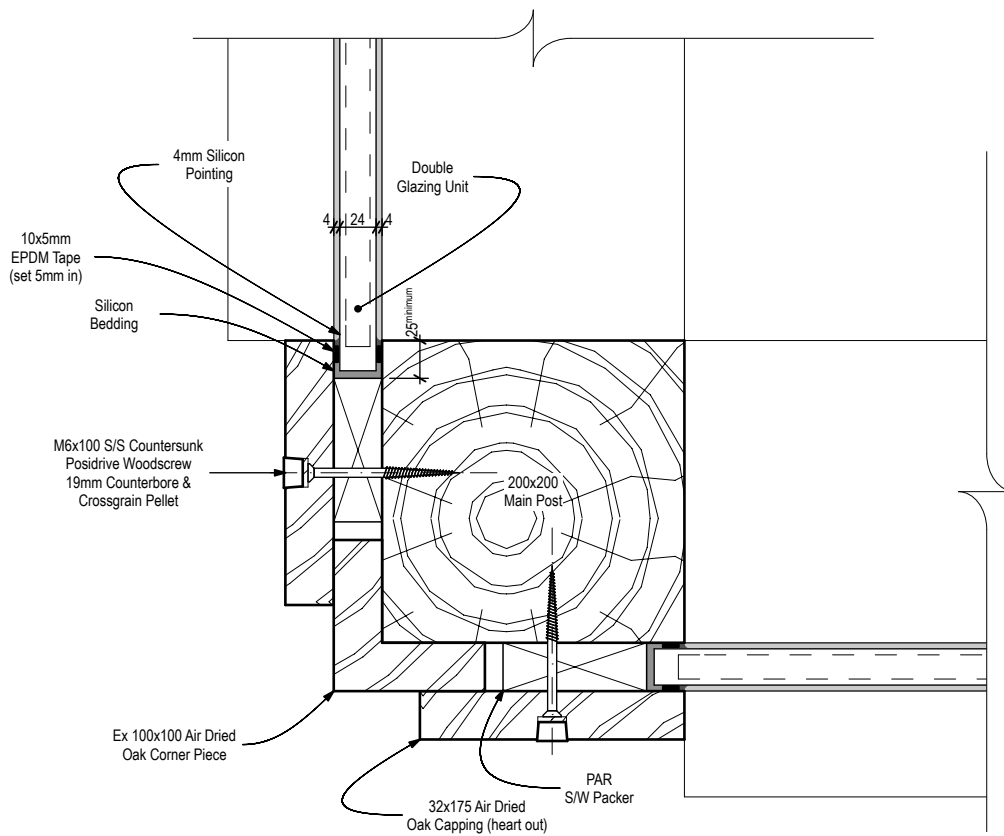


# Direct Glazing System

## Corner Post - Solution (a)



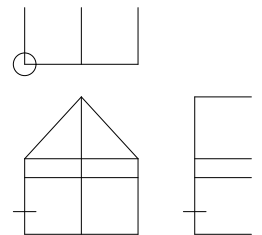
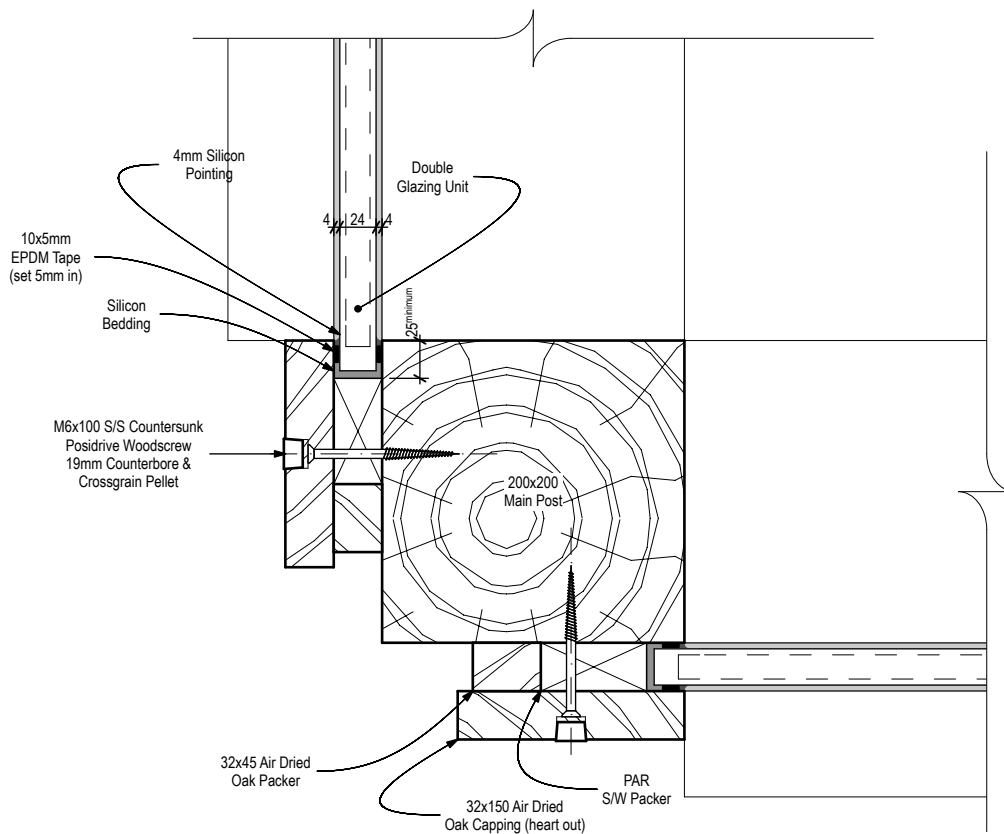
**Notes:**

- All capping timber must be joinery grade air-dried oak
- All screws must be stainless steel (counter-bored and pelleted where visible)
- Flashings, spacer bar and pointing colours to be specified by architect
- Standard double glazed units 24mm thick (4mm k glass inner leaf + 16mm spacer bar + 4mm glass outer leaf) or equivalent
- Special roof glazing units 24mm thick (6mm laminated k glass inner leaf + 12mm spacer bar + 6mm toughened solar glass outer leaf) or equivalent

# Direct Glazing System



## Corner Post - Solution (b)



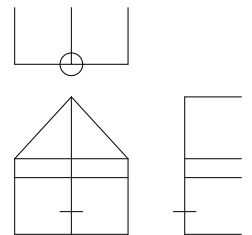
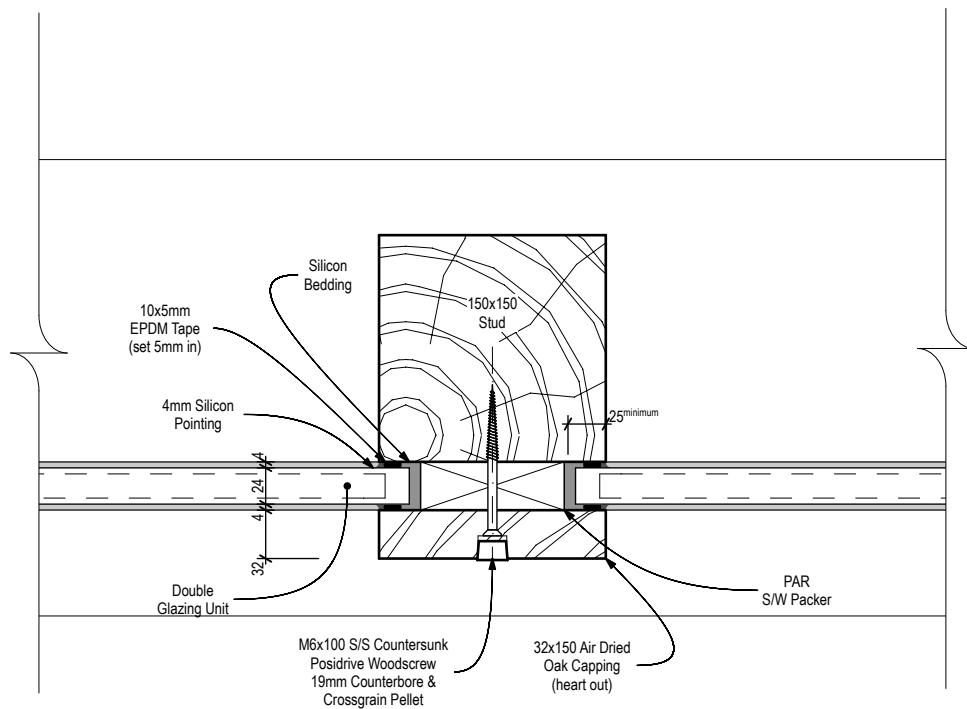
### Notes:

- All capping timber must be joinery grade air-dried oak
- All screws must be stainless steel (counter-bored and pelleted where visible)
- Flashings, spacer bar and pointing colours to be specified by architect
- Standard double glazed units 24mm thick (4mm k glass inner leaf + 16mm spacer bar + 4mm glass outer leaf) or equivalent
- Special roof glazing units 24mm thick (6mm laminated k glass inner leaf + 12mm spacer bar + 6mm toughened solar glass outer leaf) or equivalent

# Direct Glazing System



## Post / Stud / Mullion

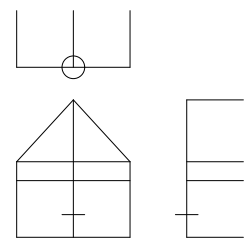
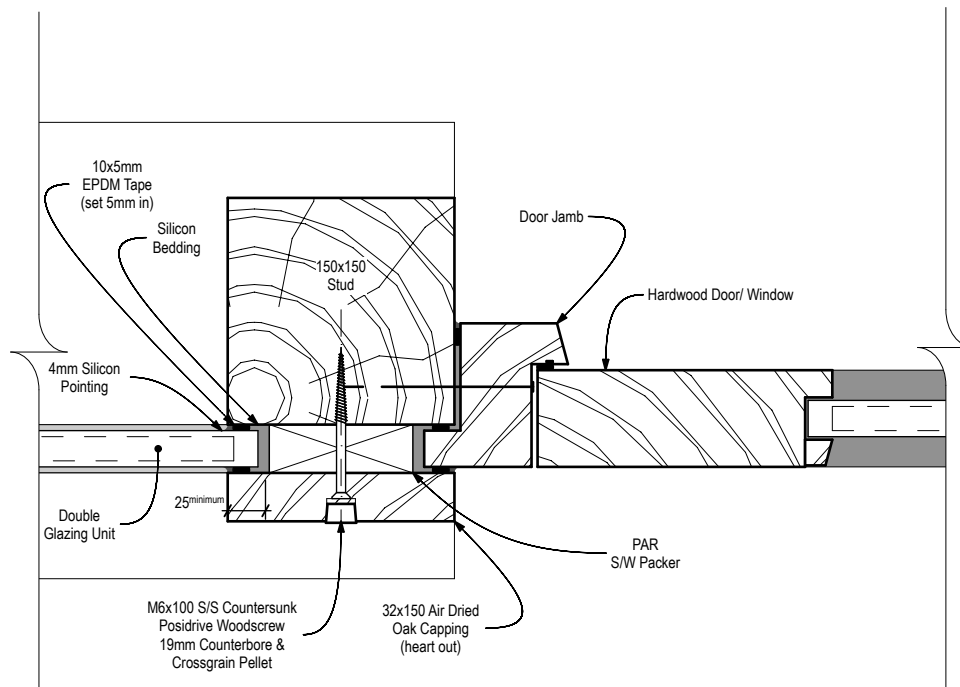


### Notes:

- All capping timber must be joinery grade air-dried oak
- All screws must be stainless steel (counter-bored and pelleted where visible)
- Flashings, spacer bar and pointing colours to be specified by architect
- Standard double glazed units 24mm thick (4mm k glass inner leaf + 16mm spacer bar + 4mm glass outer leaf) or equivalent
- Special roof glazing units 24mm thick (6mm laminated k glass inner leaf + 12mm spacer bar + 6mm toughened solar glass outer leaf) or equivalent

# Direct Glazing System

## Door/ Window Post

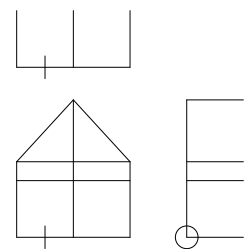
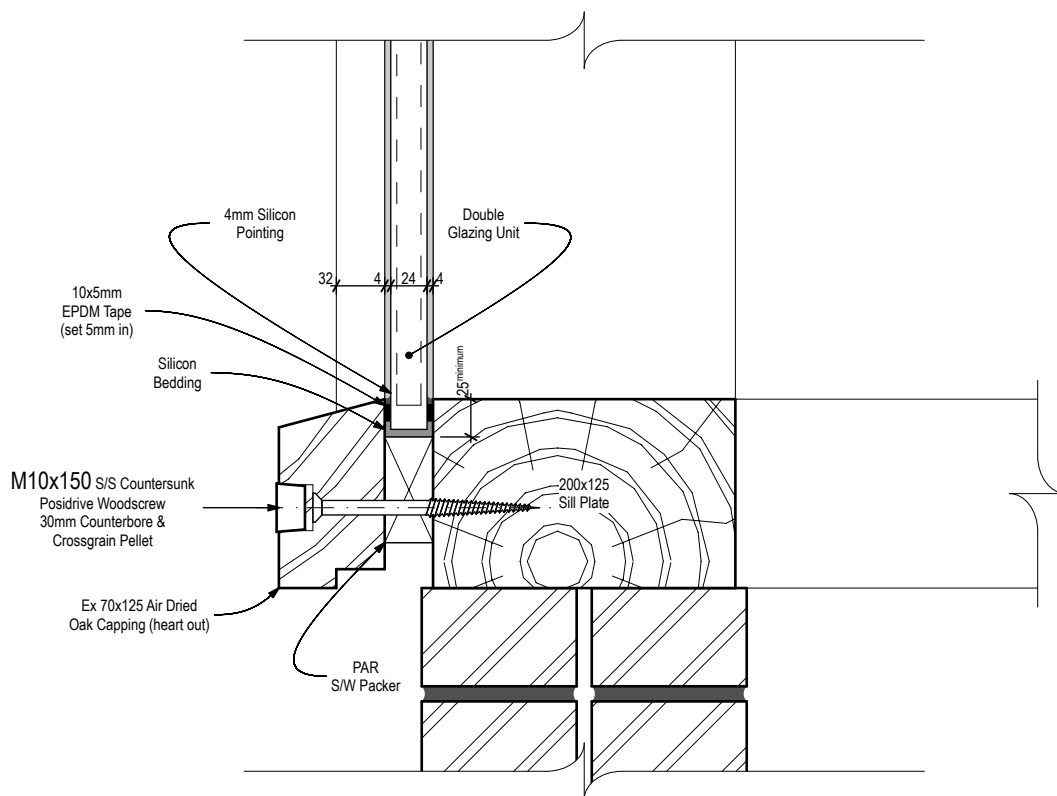


**Notes:**

- All capping timber must be joinery grade air-dried oak
- All screws must be stainless steel (counter-bored and pelleted where visible)
- Flashings, spacer bar and pointing colours to be specified by architect
- Standard double glazed units 24mm thick (4mm k glass inner leaf + 16mm spacer bar + 4mm glass outer leaf) or equivalent
- Special roof glazing units 24mm thick (6mm laminated k glass inner leaf + 12mm spacer bar + 6mm toughened solar glass outer leaf) or equivalent

# Direct Glazing System

## Sill Plate



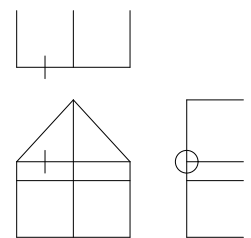
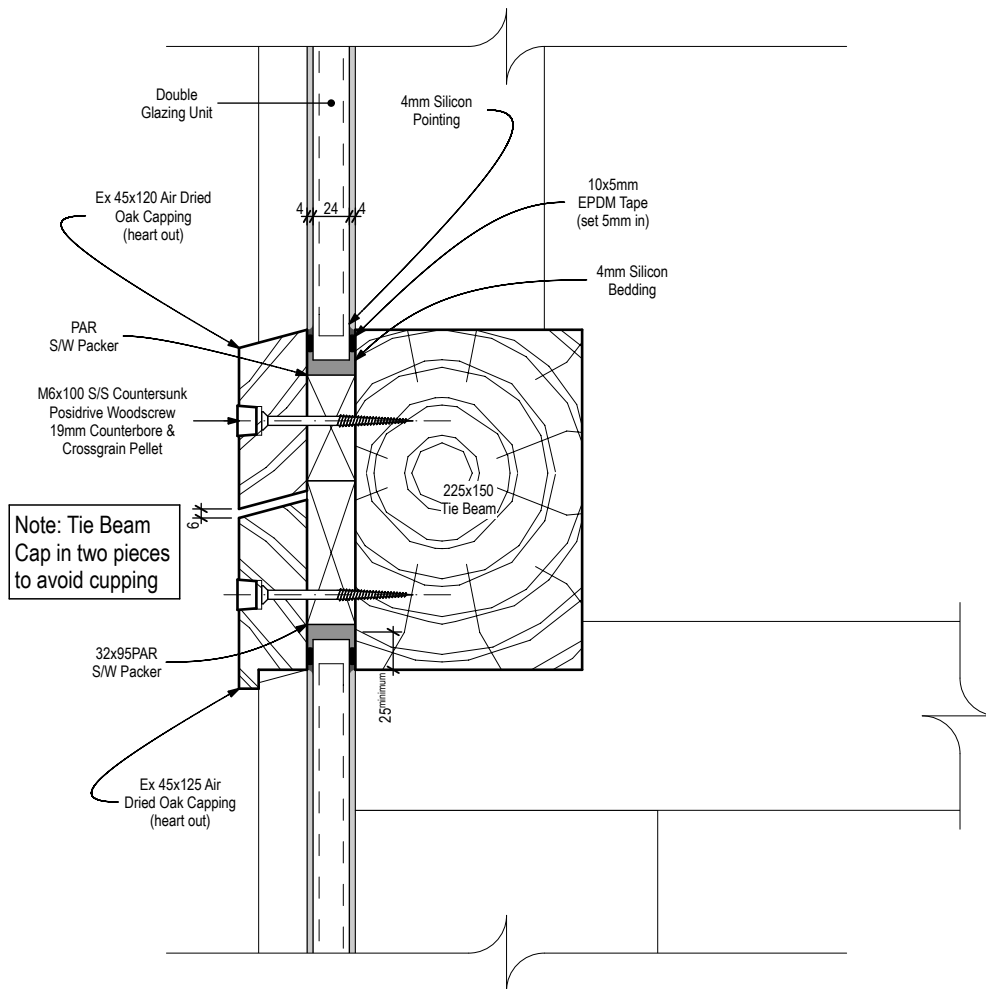
**Notes:**

- All capping timber must be joinery grade air-dried oak
- All screws must be stainless steel (counter-bored and pelleted where visible)
- Flashings, spacer bar and pointing colours to be specified by architect
- Standard double glazed units 24mm thick (4mm k glass inner leaf + 16mm spacer bar + 4mm glass outer leaf) or equivalent
- Special roof glazing units 24mm thick (6mm laminated k glass inner leaf + 12mm spacer bar + 6mm toughened solar glass outer leaf) or equivalent

# Direct Glazing System



## Tie Beam / Floor Girt



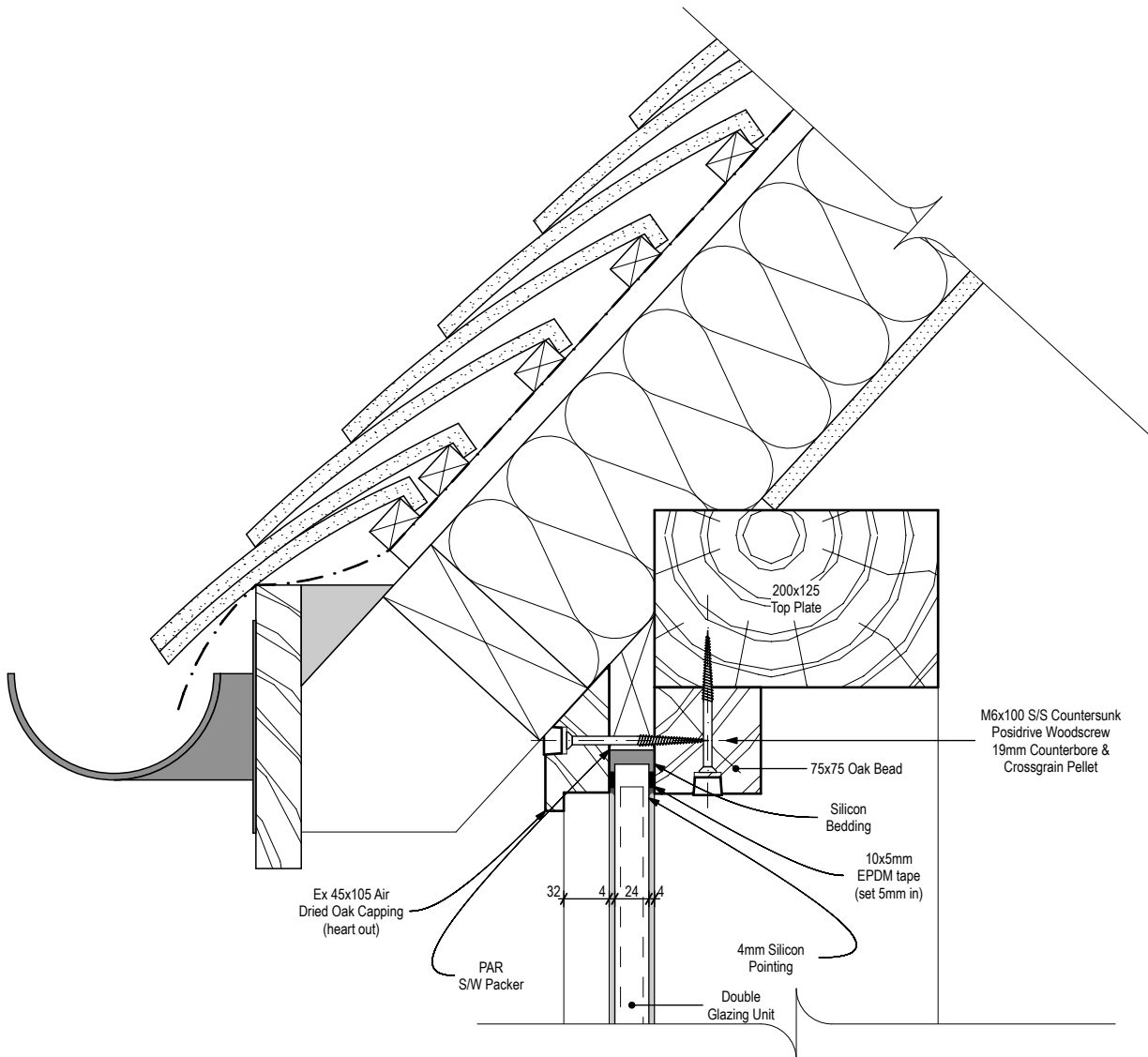
### Notes:

- All capping timber must be joinery grade air-dried oak
- All screws must be stainless steel (counter-bored and pelleted where visible)
- Flashings, spacer bar and pointing colours to be specified by architect
- Standard double glazed units 24mm thick (4mm k glass inner leaf + 16mm spacer bar + 4mm glass outer leaf) or equivalent
- Special roof glazing units 24mm thick (6mm laminated k glass inner leaf + 12mm spacer bar + 6mm toughened solar glass outer leaf) or equivalent

# Direct Glazing System



## Top Plate - Conventional Roof



M6x100 S/S Countersunk  
Posidrive Woodscrew  
19mm Counterbore &  
Crossgrain Pellet

Ex 45x105 Air  
Dried Oak Capping  
(heart out)

PAR  
S/W Packer

Double  
Glazing Unit

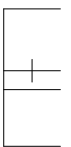
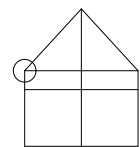
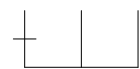
4mm Silicon  
Pointing

10x5mm  
EPDM tape  
(set 5mm in)

Silicon  
Bedding

75x75 Oak Bead

200x125  
Top Plate



### Notes:

All capping timber must be joinery grade air-dried oak

All screws must be stainless steel (counter-bored and pelleted where visible)

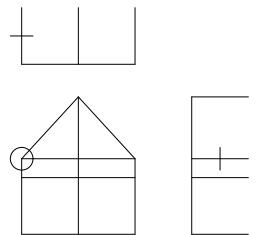
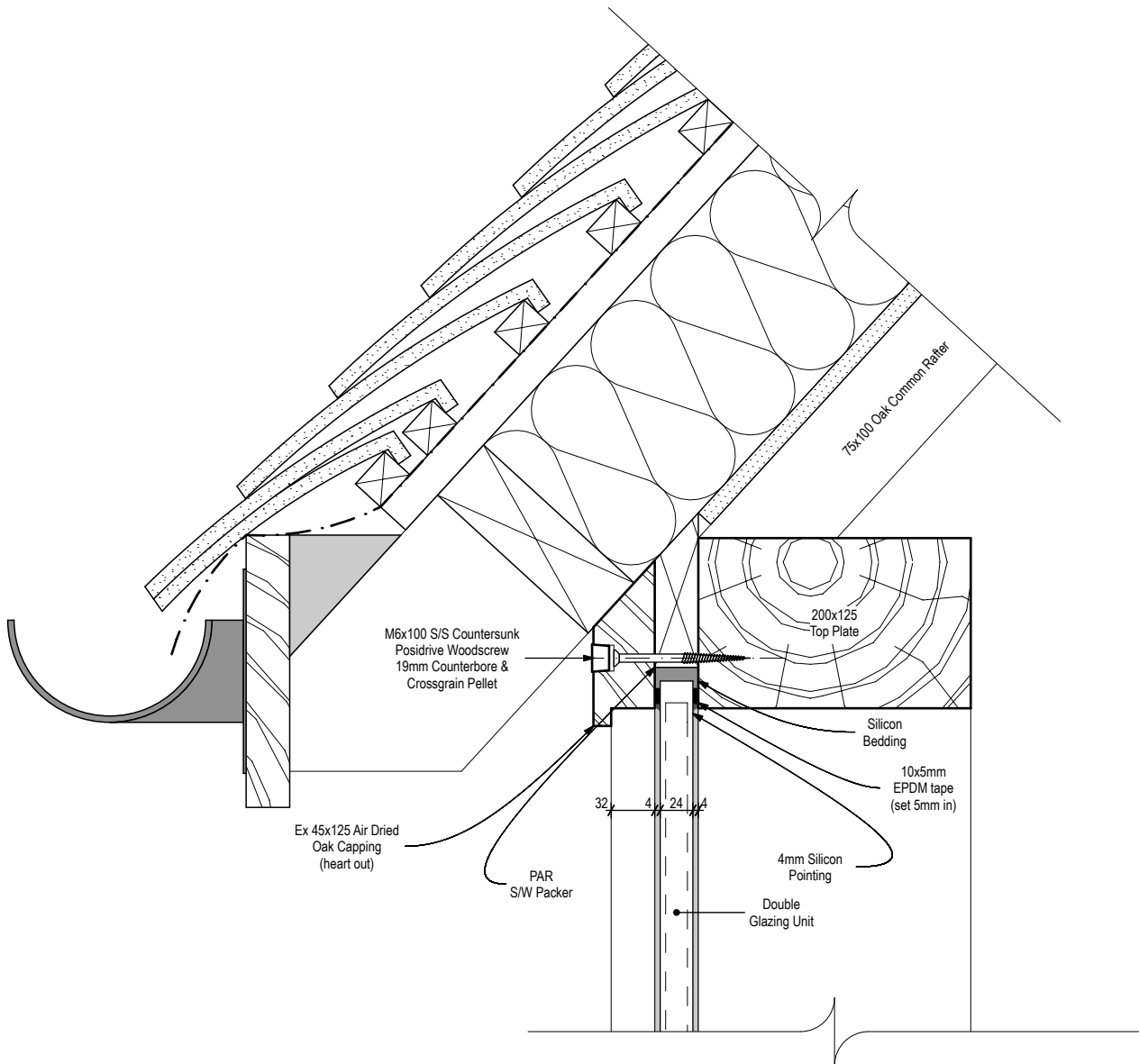
Flashings, spacer bar and pointing colours to be specified by architect

Standard double glazed units 24mm thick (4mm k glass inner leaf + 16mm spacer bar + 4mm glass outer leaf) or equivalent

Special roof glazing units 24mm thick (6mm laminated k glass inner leaf + 12mm spacer bar + 6mm toughened solar glass outer leaf) or equivalent

# Direct Glazing System

## Top Plate - Warm Deck Roof



### Notes:

- All capping timber must be joinery grade air-dried oak
- All screws must be stainless steel (counter-bored and pelleted where visible)
- Flashings, spacer bar and pointing colours to be specified by architect
- Standard double glazed units 24mm thick (4mm k glass inner leaf + 16mm spacer bar + 4mm glass outer leaf) or equivalent
- Special roof glazing units 24mm thick (6mm laminated k glass inner leaf + 12mm spacer bar + 6mm toughened solar glass outer leaf) or equivalent