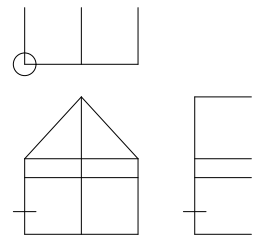
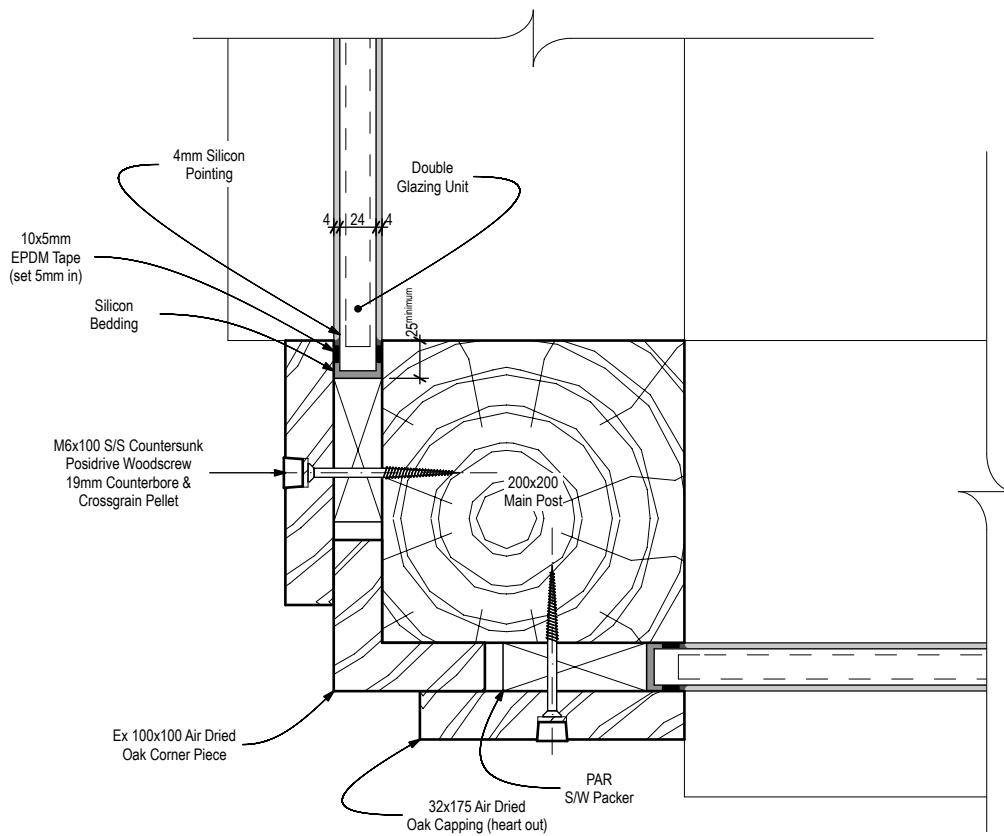


# Direct Glazing System



## Corner Post - Solution (a)



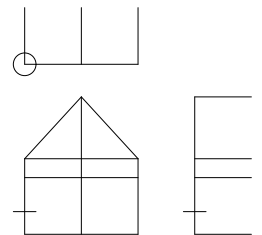
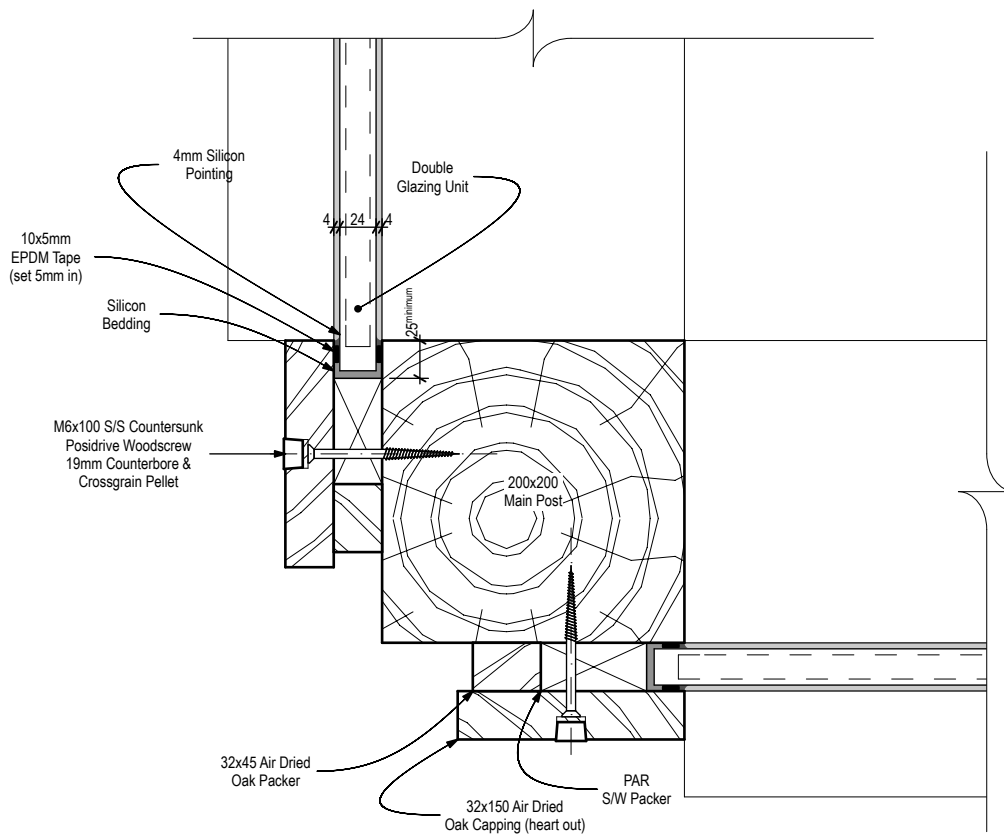
### Notes:

- All capping timber must be joinery grade air-dried oak
- All screws must be stainless steel (counter-bored and pelleted where visible)
- Flashings, spacer bar and pointing colours to be specified by architect
- Standard double glazed units 24mm thick (4mm k glass inner leaf + 16mm spacer bar + 4mm glass outer leaf) or equivalent
- Special roof glazing units 24mm thick (6mm laminated k glass inner leaf + 12mm spacer bar + 6mm toughened solar glass outer leaf) or equivalent

# Direct Glazing System



## Corner Post - Solution (b)



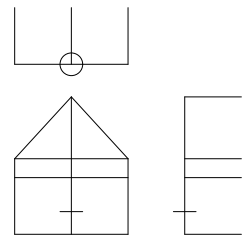
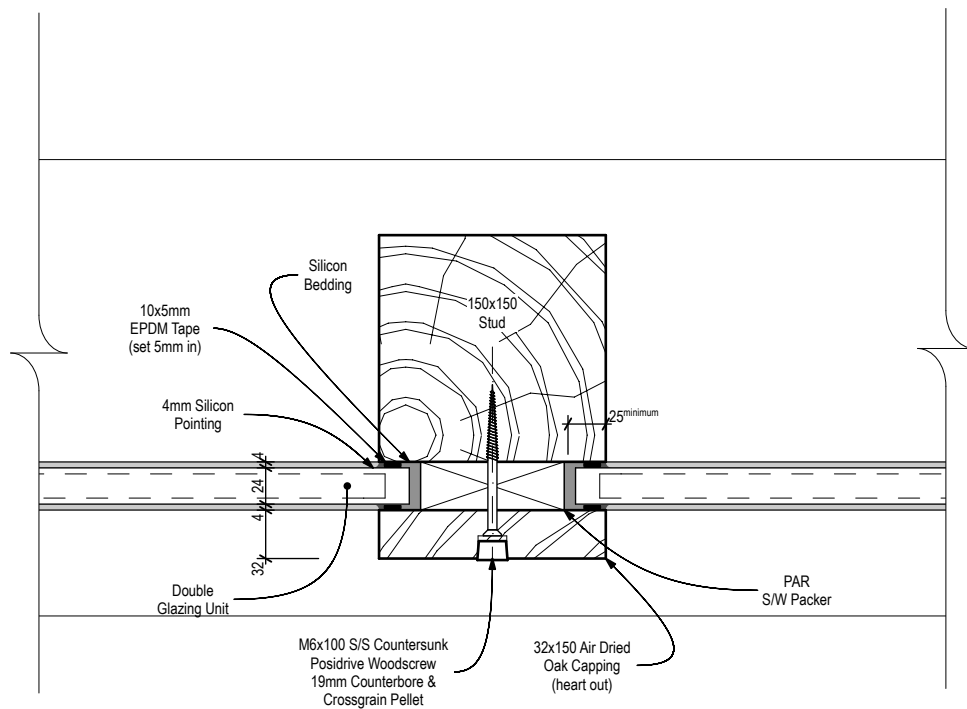
### Notes:

- All capping timber must be joinery grade air-dried oak
- All screws must be stainless steel (counter-bored and pelleted where visible)
- Flashings, spacer bar and pointing colours to be specified by architect
- Standard double glazed units 24mm thick (4mm k glass inner leaf + 16mm spacer bar + 4mm glass outer leaf) or equivalent
- Special roof glazing units 24mm thick (6mm laminated k glass inner leaf + 12mm spacer bar + 6mm toughened solar glass outer leaf) or equivalent

# Direct Glazing System



## Post / Stud / Mullion

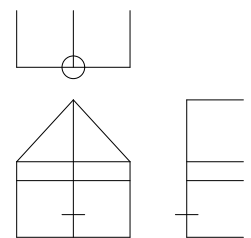
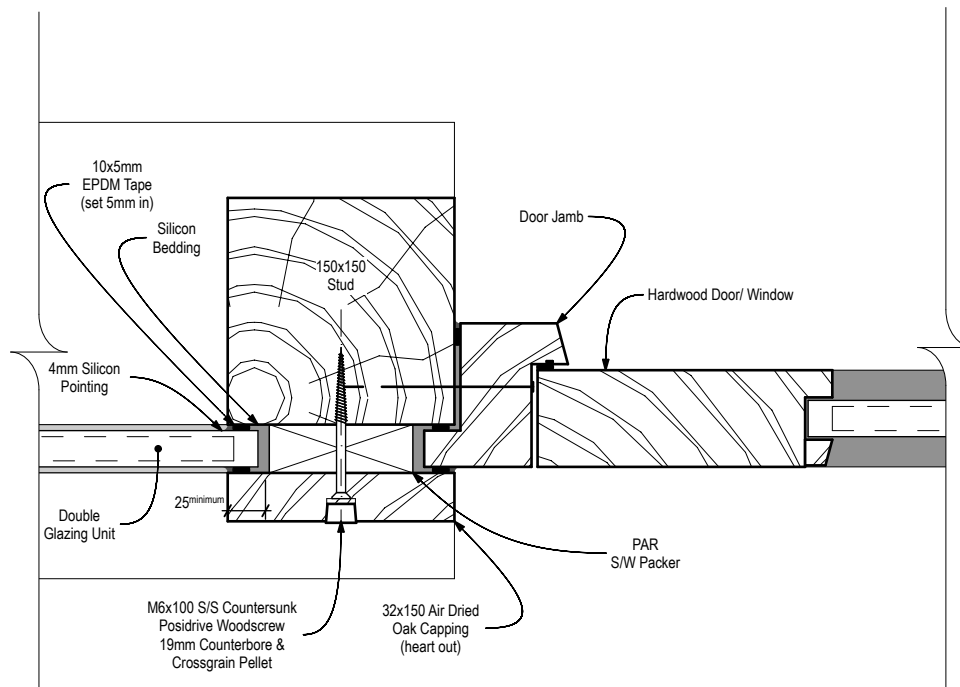


### Notes:

- All capping timber must be joinery grade air-dried oak
- All screws must be stainless steel (counter-bored and pelleted where visible)
- Flashings, spacer bar and pointing colours to be specified by architect
- Standard double glazed units 24mm thick (4mm k glass inner leaf + 16mm spacer bar + 4mm glass outer leaf) or equivalent
- Special roof glazing units 24mm thick (6mm laminated k glass inner leaf + 12mm spacer bar + 6mm toughened solar glass outer leaf) or equivalent

# Direct Glazing System

## Door/ Window Post

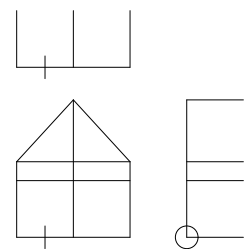
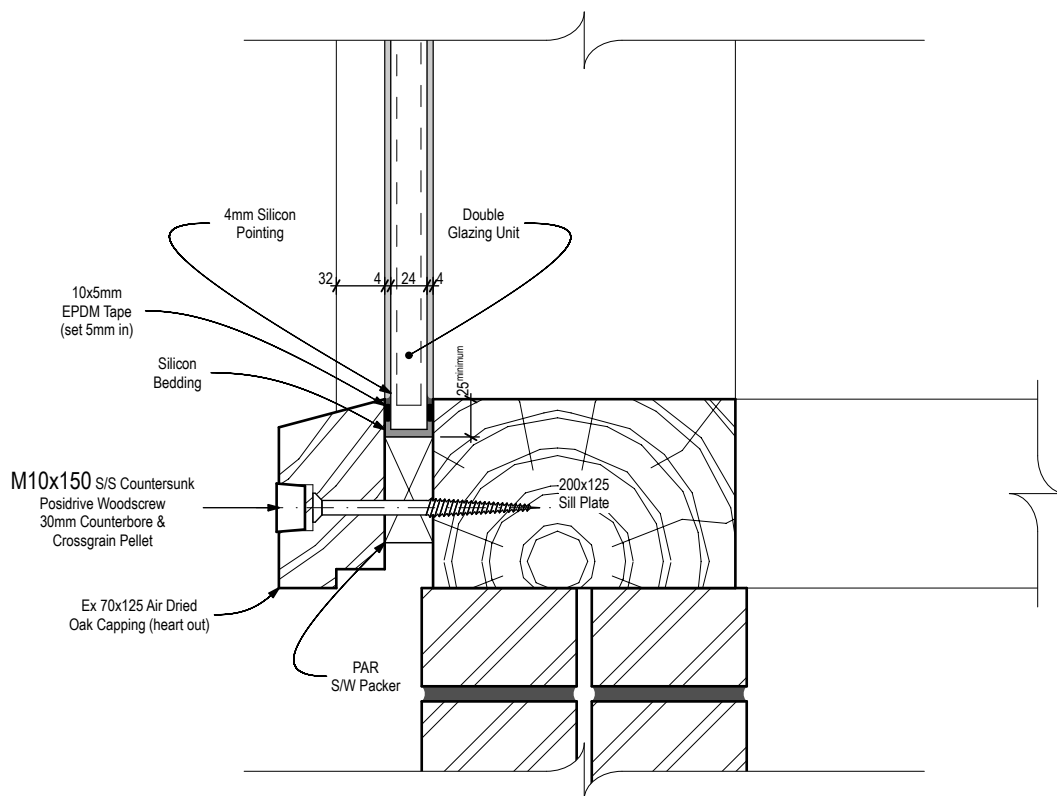


**Notes:**

- All capping timber must be joinery grade air-dried oak
- All screws must be stainless steel (counter-bored and pelleted where visible)
- Flashings, spacer bar and pointing colours to be specified by architect
- Standard double glazed units 24mm thick (4mm k glass inner leaf + 16mm spacer bar + 4mm glass outer leaf) or equivalent
- Special roof glazing units 24mm thick (6mm laminated k glass inner leaf + 12mm spacer bar + 6mm toughened solar glass outer leaf) or equivalent

# Direct Glazing System

## Sill Plate

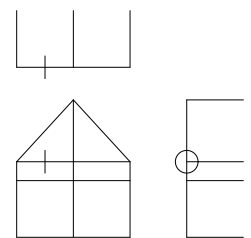
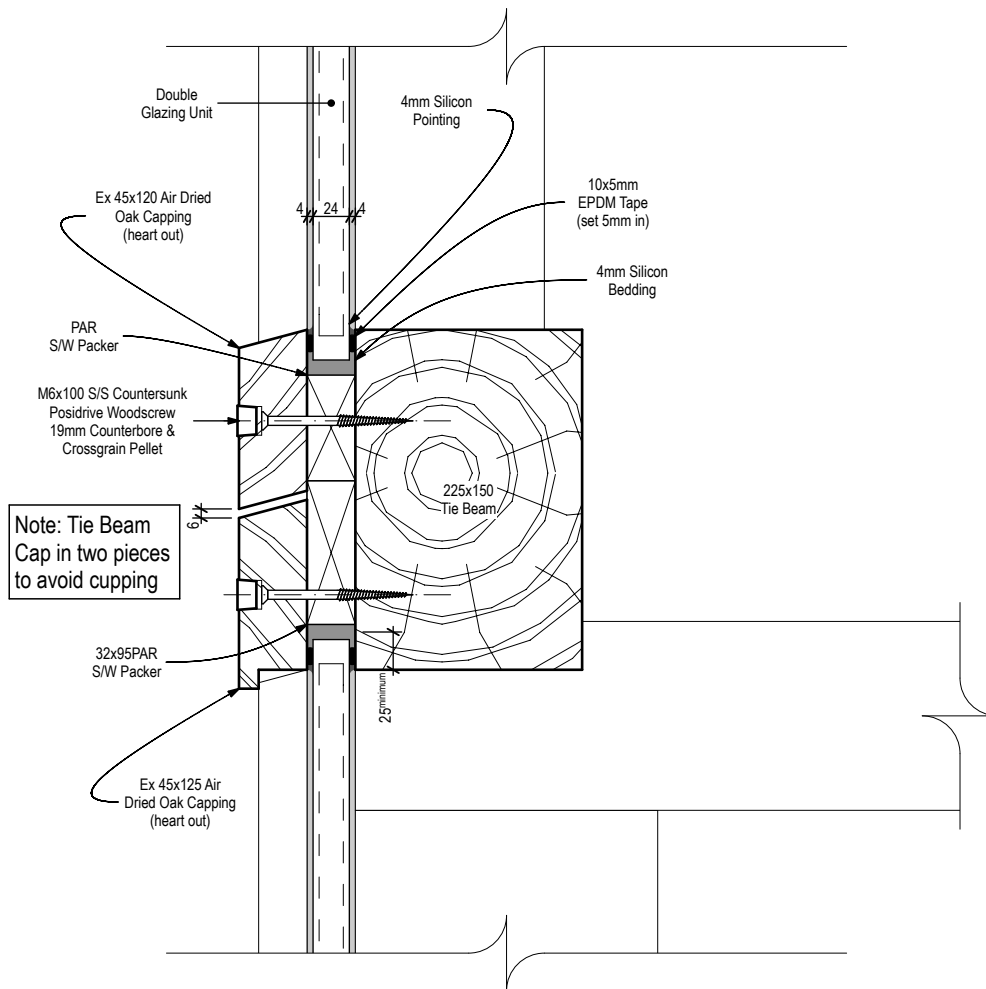


**Notes:**

- All capping timber must be joinery grade air-dried oak
- All screws must be stainless steel (counter-bored and pelleted where visible)
- Flashings, spacer bar and pointing colours to be specified by architect
- Standard double glazed units 24mm thick (4mm k glass inner leaf + 16mm spacer bar + 4mm glass outer leaf) or equivalent
- Special roof glazing units 24mm thick (6mm laminated k glass inner leaf + 12mm spacer bar + 6mm toughened solar glass outer leaf) or equivalent

# Direct Glazing System

## Tie Beam / Floor Girt



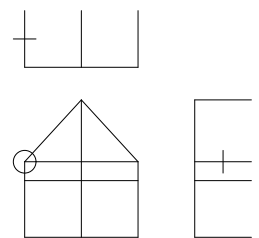
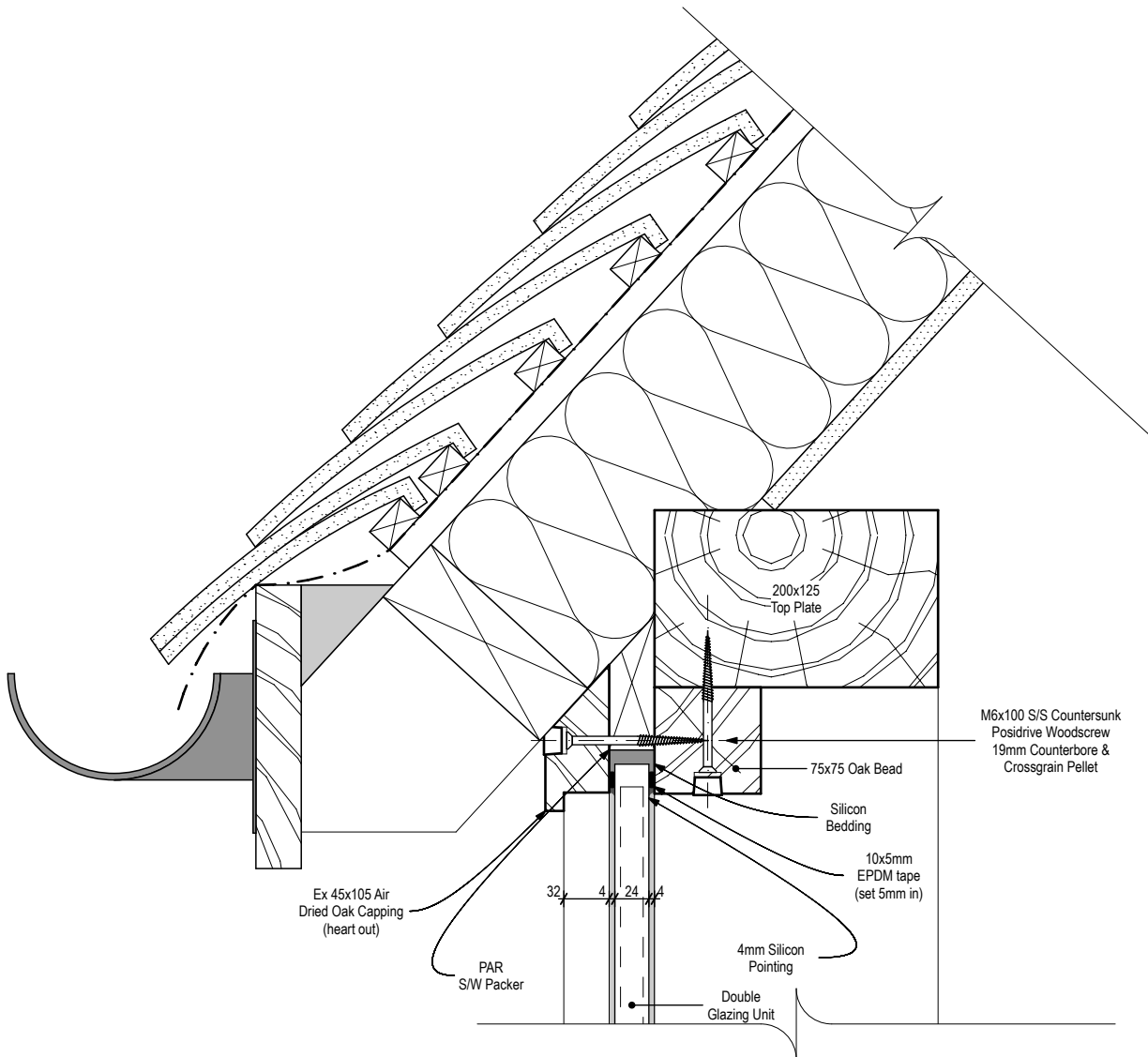
**Notes:**

- All capping timber must be joinery grade air-dried oak
- All screws must be stainless steel (counter-bored and pelleted where visible)
- Flashings, spacer bar and pointing colours to be specified by architect
- Standard double glazed units 24mm thick (4mm k glass inner leaf + 16mm spacer bar + 4mm glass outer leaf) or equivalent
- Special roof glazing units 24mm thick (6mm laminated k glass inner leaf + 12mm spacer bar + 6mm toughened solar glass outer leaf) or equivalent

# Direct Glazing System



## Top Plate - Conventional Roof

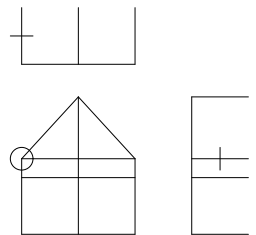
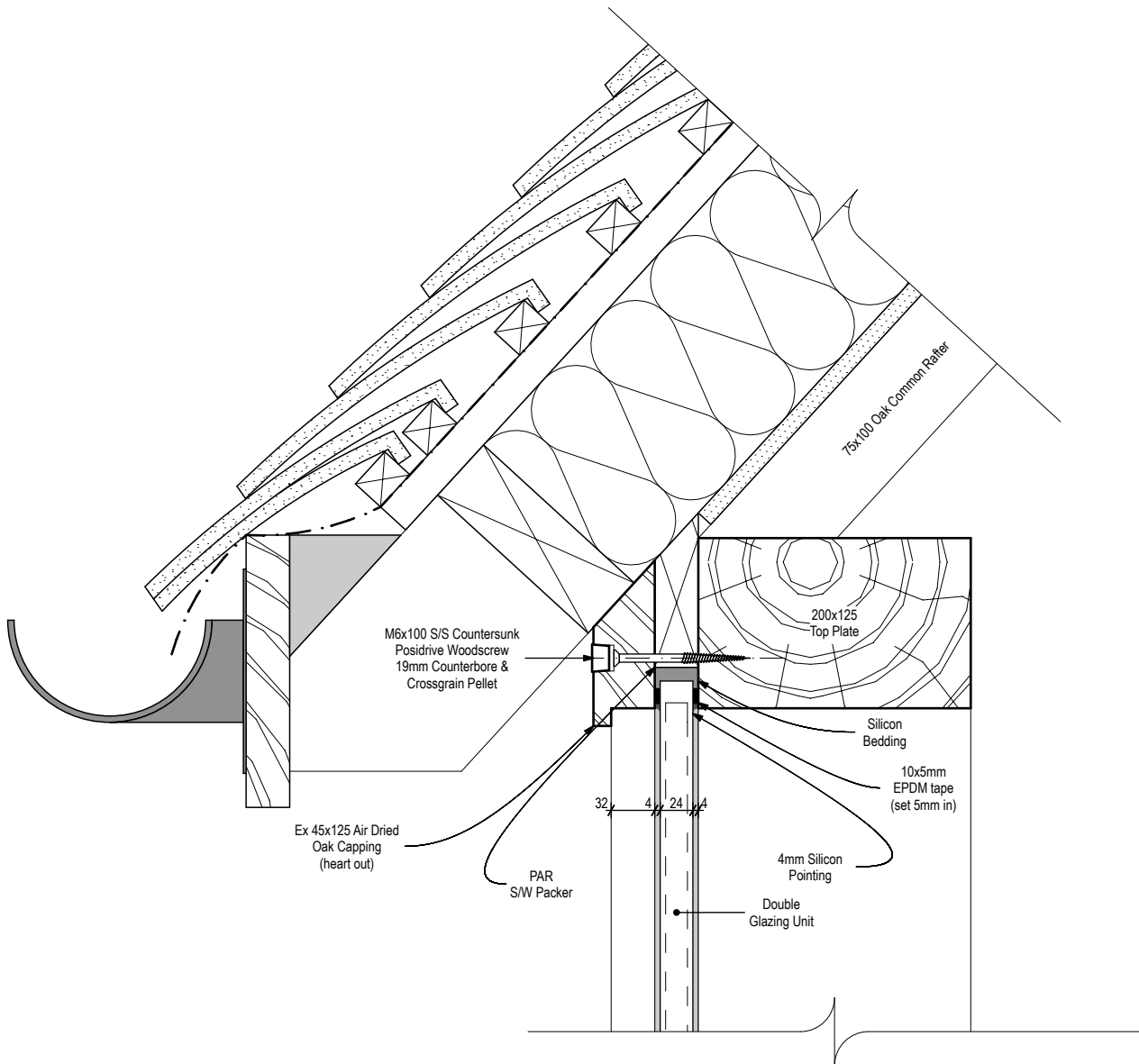


### Notes:

- All capping timber must be joinery grade air-dried oak
- All screws must be stainless steel (counter-bored and pelleted where visible)
- Flashings, spacer bar and pointing colours to be specified by architect
- Standard double glazed units 24mm thick (4mm k glass inner leaf + 16mm spacer bar + 4mm glass outer leaf) or equivalent
- Special roof glazing units 24mm thick (6mm laminated k glass inner leaf + 12mm spacer bar + 6mm toughened solar glass outer leaf) or equivalent

# Direct Glazing System

## Top Plate - Warm Deck Roof



**Notes:**

- All capping timber must be joinery grade air-dried oak
- All screws must be stainless steel (counter-bored and pelleted where visible)
- Flashings, spacer bar and pointing colours to be specified by architect
- Standard double glazed units 24mm thick (4mm k glass inner leaf + 16mm spacer bar + 4mm glass outer leaf) or equivalent
- Special roof glazing units 24mm thick (6mm laminated k glass inner leaf + 12mm spacer bar + 6mm toughened solar glass outer leaf) or equivalent